

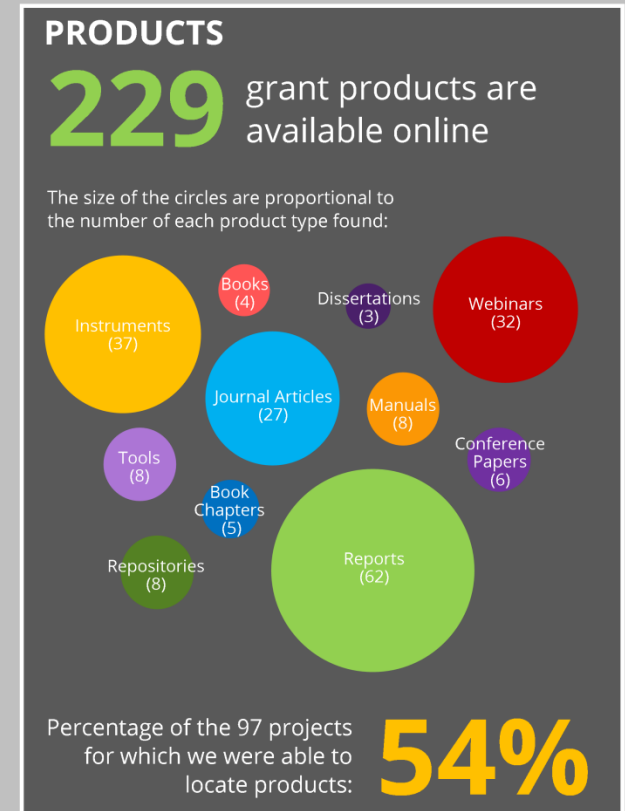
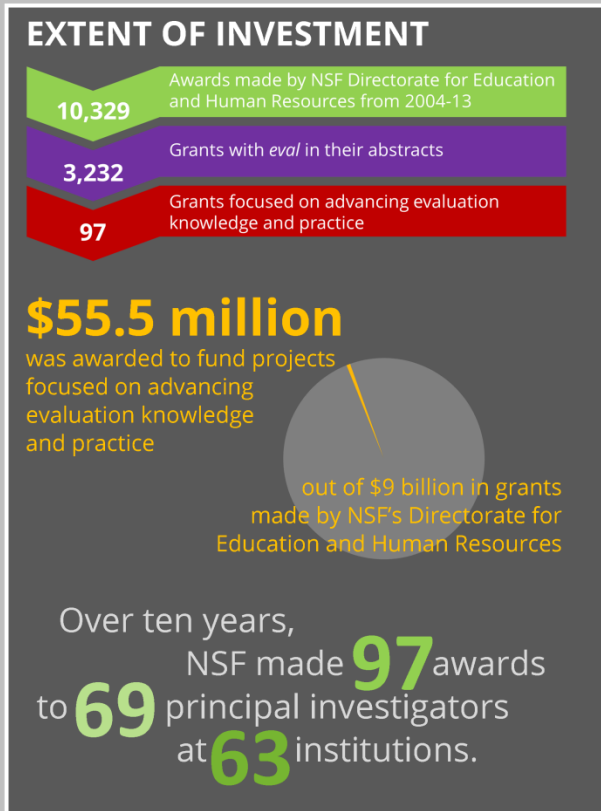
# NSF INVESTMENT IN ADVANCING EVALUATION

Lori Wingate, Corey Smith, Emma Perk, and Jason Burkhardt  
The Evaluation Center | Western Michigan University

In this exploratory study, we examined the grant awards made by the National Science Foundation's Directorate for Education and Human Resources that were intended to advance evaluation knowledge and practice among STEM educators and evaluators. For the decade spanning 2004-13, we sought to determine the **extent of investment** in this area in terms of the monetary value of the

awards, as well as the number of projects, investigators, and institutions funded. We were also interested in describing the **nature of this investment** with regard to type of activities funded and the context in which the results of the grant work were intended to have impact. Because of the work we do as an evaluation resource center for an NSF program (EvaluATE, serving the Advanced Technological

Education program), we were curious about the **availability of products** generated with the grant funding, such that individuals involved in STEM education evaluation could locate and use them. Thus far, the study has relied on grant data available from the NSF awards database and through a search for related project information on the Web.



This work was supported by the National Science Foundation under Grant No. 1204683. Any opinions, findings, and conclusions or recommendations expressed on this site are those of the authors and do not necessarily reflect the views of the National Science Foundation.

THE EC EVALUATION CENTER

WESTERN MICHIGAN UNIVERSITY

EvaluATE Evaluation Resource Center for advanced technological education

[evalu-ate.org](http://evalu-ate.org)

For inquiries, contact Lori Wingate at [lori.wingate@wmich.edu](mailto:lori.wingate@wmich.edu) or (269) 387-5922